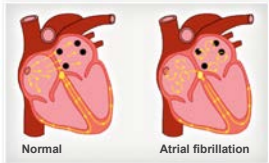




Cardiac pacemakers in medicine

Pacemakers and 'slow' AF patients

A heart rate that is....

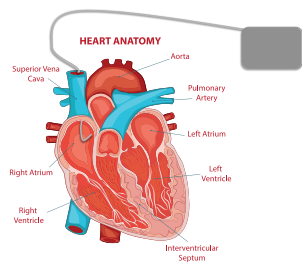


- always irregular
- slow
- fast
- pauses

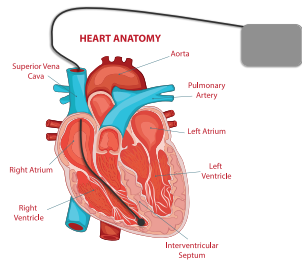
Atrial fibrillation



'Slow' atrial fibrillation



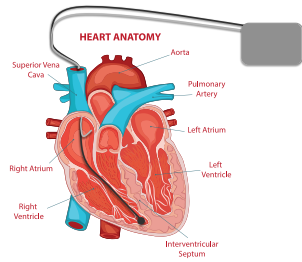
Single-chamber pacemaker (atrial)



Single-chamber pacemaker (ventricular)



Pacemaker and 'slow' AF



Dual-chamber pacemaker

Takeaway message



In **chronic** atrial fibrillation, a single-chamber ventricular pacemaker is the weapon of choice. Information from the atria is worthless.
